

CAPABILITY STATEMENT



About

Equagen is an SBA 8(a), CPUC, DBE, and nationally certified Minority-owned Business Enterprises (MBE). The company was founded with the guiding principle of 'quality and sustainable engineering', with a goal of strengthening communities and infrastructure. Since its inception, Equagen has been dedicated to delivering high-quality engineering, manufacturing, and consulting services within the power sector, covering transmission, distribution, and renewable energy. Inc. Magazine recognized Equagen on the 2023, 2024 and 2025 Inc. 5000, their annual list of fastest-growing private companies in America and ranked us #6, #8 & #12 in the Engineering Sector, respectively for each year.

Core Competencies

- Substation Engineering
- Transmission Engineering
- Distribution Engineering
- Utility-Scale BESS Engineering
- Electrical Engineering
- Civil and Structural Engineering
- Power System Engineering
- P&C Engineering and Control Panel Manufacturing
- Renewable Energy
- Project & Program Management
- Testing & Commissioning of HV&MV

Differentiators

- Highly **skilled** team
- **Flexibility** to provide our services the way you want them and be responsive to changing requirements
- Proven **ability** to handle all sizes of projects
- Consistent **quality** on all projects and deliverables
- **Manufacturing** capability for protection and control panels

NAICS Code

541330 – Engineering Services

541310 – Architectural Services

541340 – Drafting Services

335313 – Switchgear and Switchboard Apparatus Manufacturing

237130 – Power and Communication Line Related Structures

541715 – R&D in Engineering

423610 – Electrical Equipment, Wiring Supplies, and Related Equipment Merchant Wholesalers

Duns:

081216094

CAGE Code:

841 A0

SAM UEI:

CVJ6AETEHJ1

Past Performance (Selected)



Owner's Engineer (OE) – Glenarm BESS (100MWh), California; Harlingen BESS (25 MWh), Texas.

Responsible for reviewing the EPC's complete design package for the BESS and switchyard and coordinating with the local jurisdiction to facilitate permitting.



Central Carolina Industrial Park, Erwin, NC

Designer of Record (DOR) for upgrade of utilities to support over 230,000 sq foot office buildings and manufacturing facility.



Lower Summit Substation, Snow Summit, CA

Designer of Record (DOR) for full engineering services for 34.5kV/4.16kV lower Summit substation to feed power to Snow Summit Resort at the base.



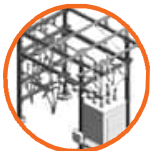
Upper Summit Substation, Snow Summit, CA

Designer of Record (EOR) for full engineering services for 34.5kV/4.16kV lower Summit substation to feed power to Snow Summit Ski Resort cable cars & infrastructures.



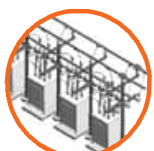
Taiwanese Semiconductor Manufacturing Company (TSMC) 230kV GIS, Phoenix, AZ

Engineer of Record (EOR) for electrical systems to provide power to Semi Conductor Manufacturing Plant.



Bocanova 138kV/34.5kV AIS Substation & 300MW/600MW BESS, Alvin, TX

Designer of Record (DOR) for full engineering services for 300MW/600MW BESS and upstream 138kV substation. This included all interconnection & arc flash studies and construction administration.



Corazon Ranch 345kV/34.5kV AIS Substation, Laredo, TX

Designer of Record (DOR) for full engineering services including all interconnection & arc flash studies and construction administration.



Talen Energy Data Center, 69/500kV GIS, 69/230kV GIS and 69kV AIS 3 Substations, Berwick, PA

Provided controls engineering, manufacturing, and testing of Control Cabinets to operate and control 3 high voltage substations and the design of high voltage power cable insulated cable underground system.



San Onofre Nuclear Plant 230kV FACTS Substation, San Clement, CA

Engineer of Record (EOR) for structural and seismic engineering of \$50m substation infrastructure and facilities.



San Juan Capistrano 138kV GIS Substation, California

Responsible Engineer for EPCM for the review of seismic qualifications of 230kV GIS substation submitted by an EPC contractor.



Guajillo BESS 100MW/200MW, Laredo, TX

Designer of Record (DOR) for full engineering services including all interconnection & arc flash studies and construction administration.



69kV Overhead Transmission Line, Boulder City, NV

Engineer of Record (EOR) for the entire 4 miles OH transmission line design. This work included PLS-CADD modeling, PLS-Pole modeling and structural calculations, drawings, hardware definition, specification, and bill of materials.



Department of Energy, NNSS 138kV Power Transmission System Replacement (PTSR), Mercury, NV

Review of OH Transmission line design and Engineer of Record (EOR) for foundation design for 23.5 miles of 138kV -3phase single circuit OH power transmission line.



Maricopa Energy Center Gen-tie's 500kV OH transmission Line, Maricopa, AZ

Owner Engineer (OE) for 7 miles 500kV OH transmission line.



Citrus Flatts 150MW/300MW BESS, Harlingen, TX

Engineer of Record (EOR) for full engineering services including all studies and construction administration.



San Luis Rey 230kV FACTS Substation, San Luis Rey, CA

Engineer of Record (EOR) for structural and seismic engineering substation infrastructure and facilities.



MANUFACTURING CAPABILITY



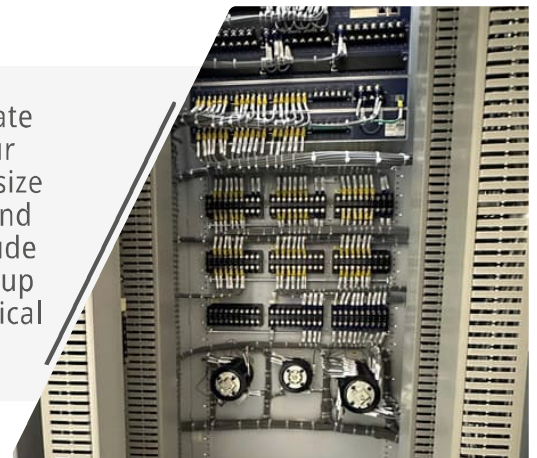
CUSTOM CONTROL PANELS

Engineering Solutions since 2018
MBE, CPUC, BBE & 8(a) Certified

Providing engineering, design, procurement and control panel manufacturing services.



We design, manufacture, test and Integrate custom-designed control panels for your specific needs-treating projects of every size with the same dedication of excellence and workmanship. Our control solutions include utility and industrial systems from 69 KV up to 800 KV AIS & GIS Controls, Pharmaceutical and Manufacturing Industry



Our comprehensive range of power distribution, control and instrumentation systems covers all elements of power and control systems including GIS Local Control Cabinets, PLC Control Panels, MCC, SCADA, RTU, Control & Relay Panels, Feeder, Busbar and Transformer Panels. Our capability in Pharmaceutical industry includes PLC, SCADA, DCS, VFD, MCC, HVAC, BMS, Batch Controls and Safety & Emergency Control Panels .



Our custom engineered control solutions are built to meet the most stringent customer design criteria including control panels that meet UL 508A, UL 689A and UL 698 certification, and US Utility and Manufacturing Standards & Procedures for safe and reliable operation.



ABOUT

Equagen is a leading licensed engineering and manufacturing firm with extensive expertise in designing and delivering comprehensive Battery Energy Storage Systems (BESS) solutions. We specialize in engineering and design services, project management, and construction support, as well as permitting and regulatory compliance. Our capabilities include integrating BESS with renewable energy projects for grid stabilization, renewable integration, and backup power, along with grid modernization solutions, such as the manufacturing of SCADA and communication panels.

CORE COMPETENCIES

Battery Energy Storage Solutions | Comprehensive Engineering & Design Services | **Substation & Transmission Line Engineering** | Power Systems Modeling | **Renewable Energy** | SCADA & Communication Panel Manufacturing | **Project Management & Construction Support**

PAST PERFORMANCE (SELECTED)

600MWh Boconova BESS Project, Alvin, TX

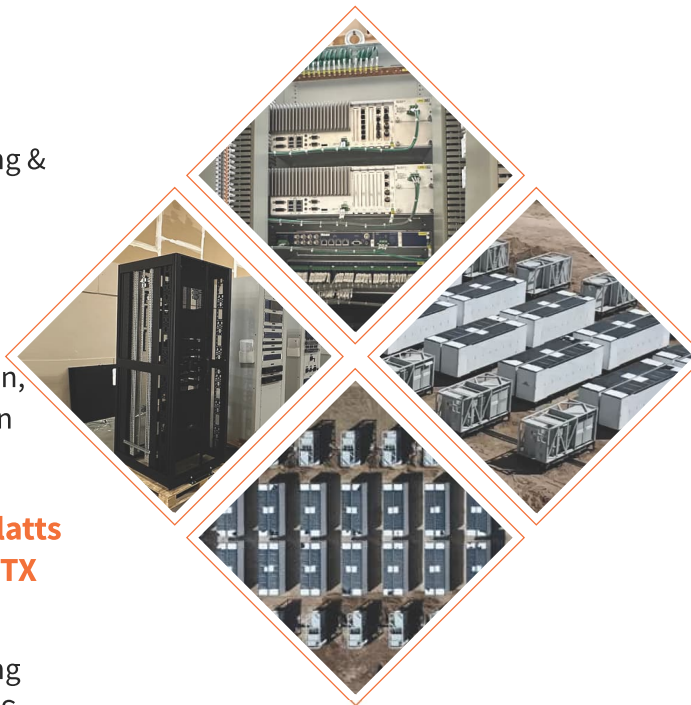
Scope:

- ▶ Comprehensive Engineering & Design and Testing and Commissioning Support
- ▶ Project Management and Construction Support
- ▶ Manufacturing of Protection, SCADA and Communication Panels

100MW/200MWh Citrus Flatts BESS Project, Harlingen, TX

Scope:

- ▶ Comprehensive Engineering and Design Services in BESS
- ▶ Project Management and Construction Support



200MW/400MWh Guajillo BESS Project, Laredo, TX

Scope:

- ▶ Comprehensive Engineering & Design and Testing and Commissioning Support
- ▶ Project Management and Construction Support
- ▶ Manufacturing of Protection, SCADA and Communication Panels

12MW Longtown Microgrid BESS Project, South Carolina

Scope:

- ▶ Comprehensive Engineering and Design Services
- ▶ Project Management and Construction Support



Inc Magazine recognized Equagen on the 2023, 2024 and 2025 Inc 5000, their annual list of fastest-growing private companies in America.

